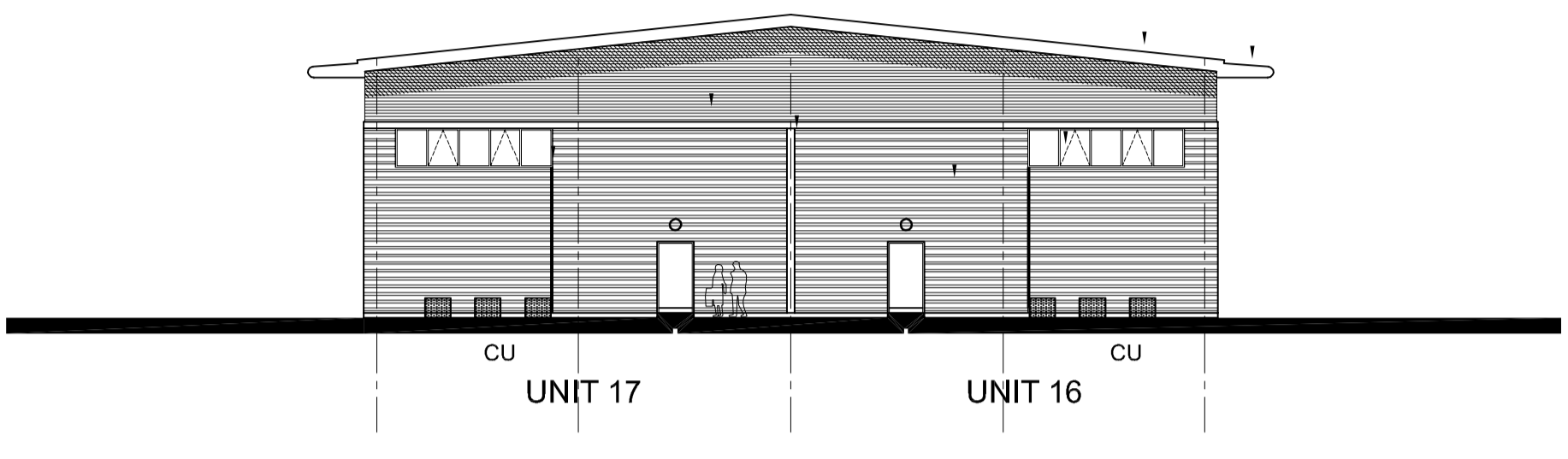
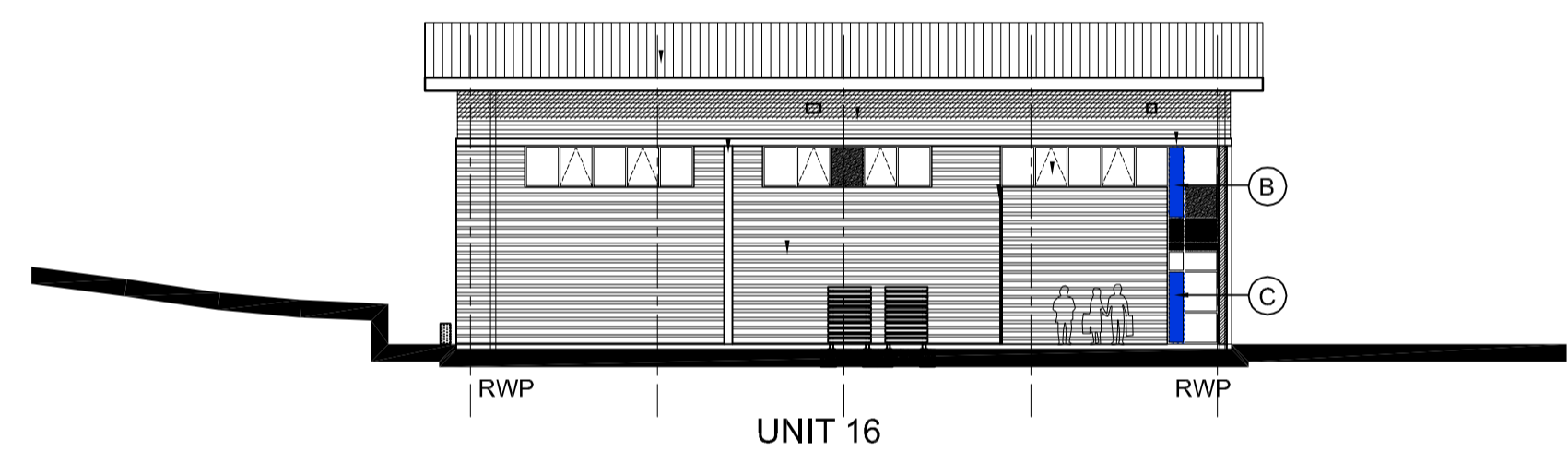


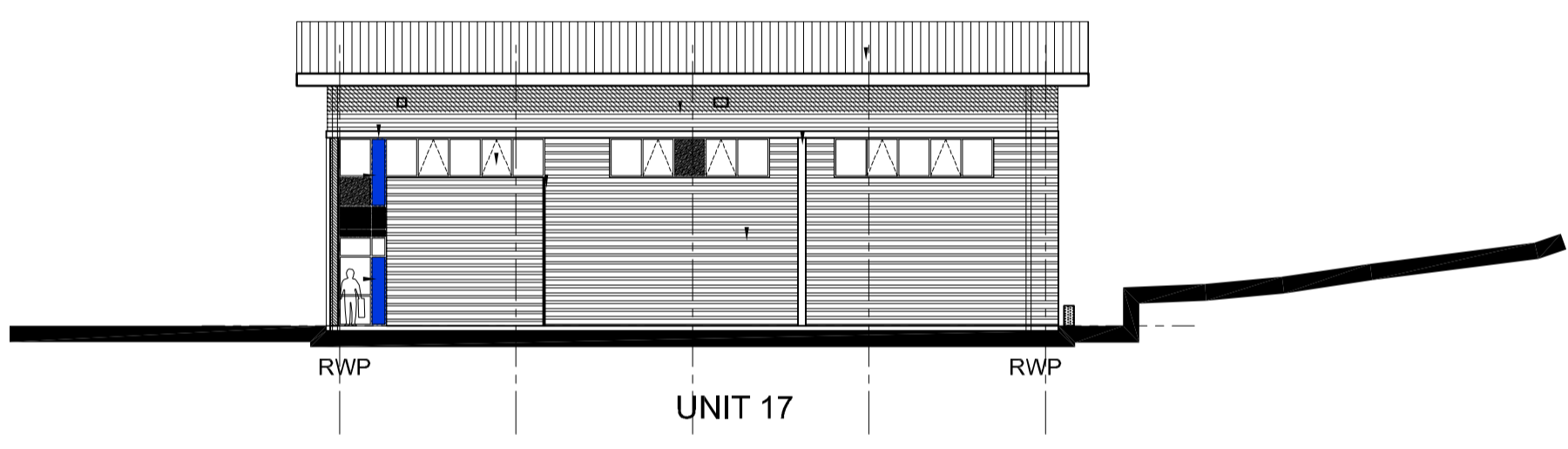
01 UNIT 16 & 17 NORTH ELEVATION
1216 1:200



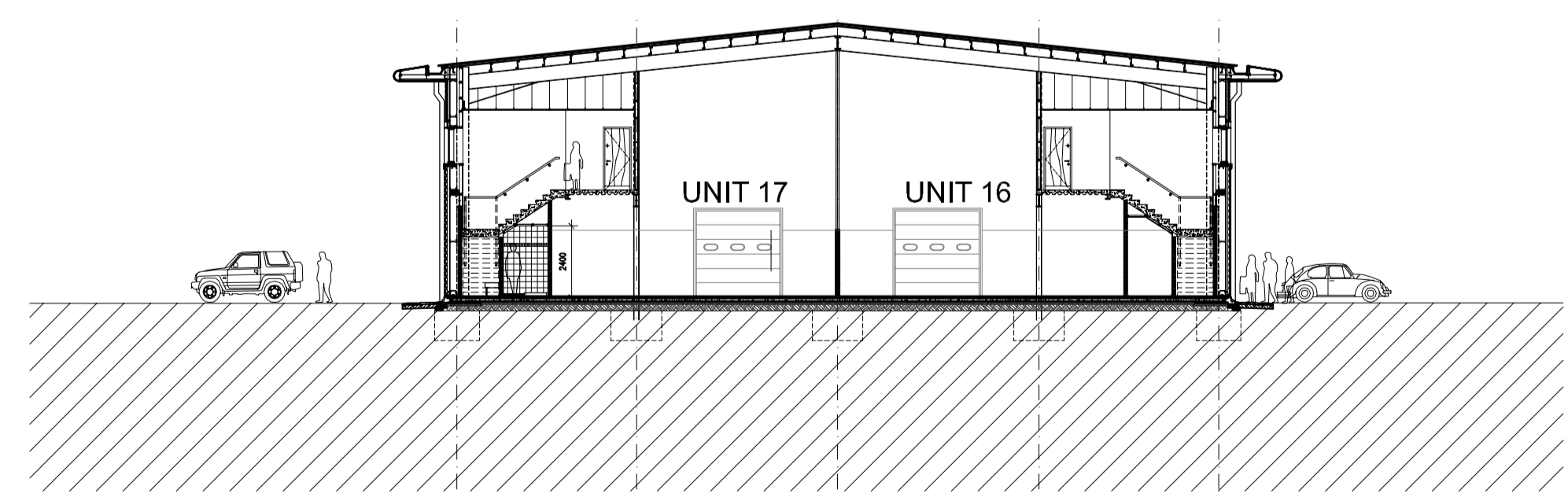
02 UNIT 16 & 17 SOUTH ELEVATION
1216 1:200



03 UNIT 16 & 17 EAST ELEVATION
1216 1:200



04 UNIT 16 & 17 WEST ELEVATION
1216 1:200



05 UNIT 16 & 17 SECTION
1216 1:200

SCHEDULE OF EXTERNAL FACING MATERIALS

INDUSTRIAL UNITS

- 1 Facing Brick Kingsbury Smooth Cream
- 6 Overhanging roof soffit and Fascia Flat metal panels colour: Prisma Zeus metallic dark grey with recessed downlighters in soffit
- 7 Entrance Canopy Flat metal panels colour: Prisma Zeus metallic dark grey with recessed downlighters in soffit
- 10 Profiled Wall Cladding Horizontally laid sinusoidal profiled steel cladding Colour: Prisma Grey Aluminium RAL 9007
- 11 Profiled Wall Cladding Horizontally laid half round profiled steel cladding Colour: Prisma Silver Metallic RAL 9006
- 12 Unit Roof Fully Insulated composite roof panel Colour: HPS 200 Albatross Light Grey
- 13a Windows Clear low E glass in polyester powder coated aluminium window system. Colour: RAL 7015 Charcoal grey
- 13b Windows Laminated translucent glass in polyester powder coated aluminium window system. Colour: Charcoal grey RAL 7015
- 13c Windows Laminated blue glass panels in polyester powder coated aluminium window system. Colour: Charcoal grey RAL 7015
- 14 Unit number Stainless Steel numeral
- 15 High Level Horizontal Band High Level Recessed Horizontal Feature Band Charcoal grey RAL 7015
- 16 Loading Doors Stucco finished aluminium
- 17 Personnel/fire exit Doors Coated steel doors Prisma Grey Aluminium
- 18 Joints Vertical 'T' Flashing colour Charcoal grey RAL 7015
- 19 Joints Recessed 300mm wide vertical flashing - colour Charcoal grey RAL 7015

- A 6.8mm VANCEVA LAMINATED BLUE GLASS TOUGHENED PANE - REF TRUE BLUE
16mm ARGON SPACER COMPRISING 90% ARGON
6mm CLEAR LOW E-GLASS TOUGHENED
- B 6.8mm VANCEVA LAMINATED BLUE GLASS TOUGHENED PANE - REF AQUAMARINE
16mm ARGON SPACER COMPRISING 90% ARGON
6mm CLEAR LOW E-GLASS TOUGHENED
- C 6.8mm VANCEVA LAMINATED BLUE GLASS TOUGHENED PANE - REF SAPPHIRE
16mm ARGON SPACER COMPRISING 90% ARGON
6mm CLEAR LOW E-GLASS TOUGHENED
- D 6.8mm VANCEVA LAMINATED BLUE GLASS TOUGHENED PANE - REF 6166
16mm ARGON SPACER COMPRISING 90% ARGON
6mm CLEAR LOW E-GLASS TOUGHENED

NOTES:

SUBJECT TO STATUTORY CONSENTS
 SUBJECT TO SURVEY
 BASED ON OS MAP REPRODUCED BY PERMISSION OF CONTROLLER OF HM STATIONARY OFFICE (C) CROWN COPYRIGHT
 COPYRIGHT RESERVED
 DO NOT SCALE THIS DRAWING
 DO NOT USE ELECTRONIC VERSIONS OF THIS DRAWING TO DETERMINE DIMENSIONS UNLESS SPECIFICALLY AUTHORISED BY MICHAEL SPARKS ASSOCIATES
 IF USING AN ELECTRONIC VERSION OF THIS DRAWING FIGURED DIMENSIONS TAKE PRECEDENCE AND NOTIFY MICHAEL SPARKS ASSOCIATES OF ANY DISCREPANCIES

ENSURE SEALING OF ALL JUNCTIONS TO COMPLY WITH PART L

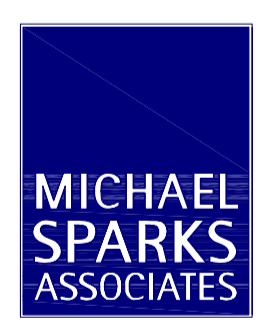
U-Values	NOTE: ROOF AND WALL CLADDING TO BE DESIGNED BY SPECIALIST CONTRACTOR. CLADDING DETAILS TO BE READ IN CONJUNCTION WITH THE SPECIFICATION AND ALL RELEVANT BRITISH STANDARDS. INCLUDE VAPOUR BARRIER TAPE AROUND ALL OPENINGS AND JUNCTIONS.
Roof: 0.25	
Floors: 0.25	
Walls: 0.35	
Glazing: 1.50	

ALL DIMENSIONS TO BE CHECKED ON SITE.
STEEL COLUMN SIZES TO BE CONFIRMED AND TOLERANCES TO BE AGREED.

AS BUILT

THIS "AS-BUILT" DRAWING IS BASED ON INFORMATION SUPPLIED TO MICHAEL SPARKS ASSOCIATES BY MC LAREN CONSTRUCTION AND INCORPORATES INSTRUCTIONS AND OTHER DESIGN INFORMATION GIVEN TO MC LAREN CONSTRUCTION DIRECTLY BY OTHERS

REV	DATE	NOTE	DRAW	CHKD
A	25.03.2009	Refer to sub-contractors drawings for specialist details This supercedes drawing no: 2716/RE/323 rev.E	JH	NSC



FROGMORE

CHARTERED ARCHITECTS
 11 PLATO PLACE
 ST DIONIS ROAD
 LONDON SW6 4TU
 TELEPHONE 020 7736 6162
 FAX 020 7736 3896
 www.msp-sparks.co.uk

TITLE
CROSSWAYS, DARTFORD
 DRAWING
SCHOONER PARK UNITS 16-17 ELEVATIONS & SECTION
 CLIENT
FROGMORE

DATE	SCALE	DRAWN
MARCH 2009	1:200 @ A1	JH
	STATUS	CHECKED
	AS BUILT	NSC

DRAWING NUMBER
2716 / AB / 1216 A