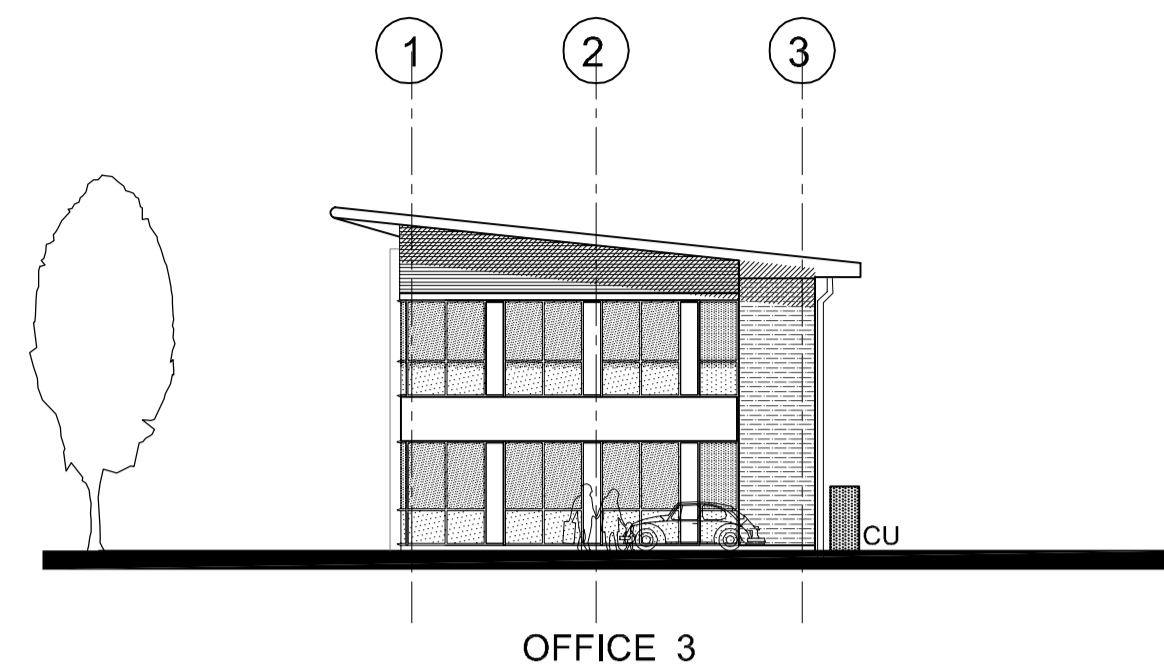
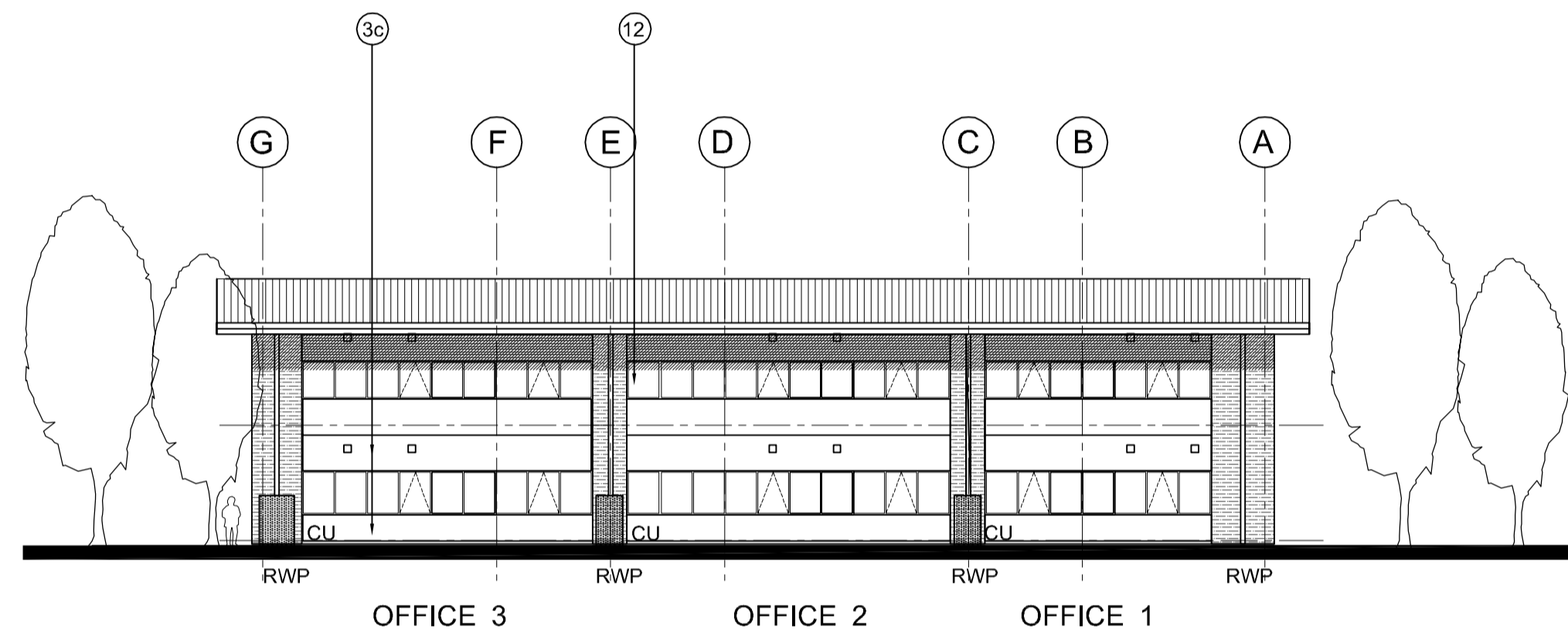


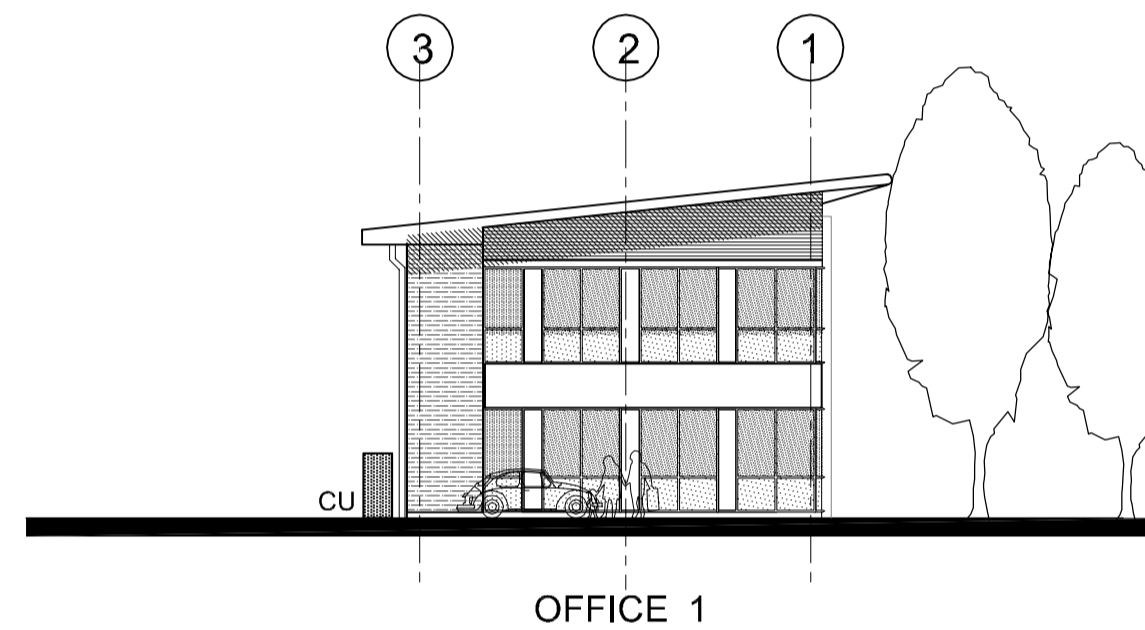
01
1105 WATERSIDE COURT OFFICE 1-3 WEST ELEVATION
1:200



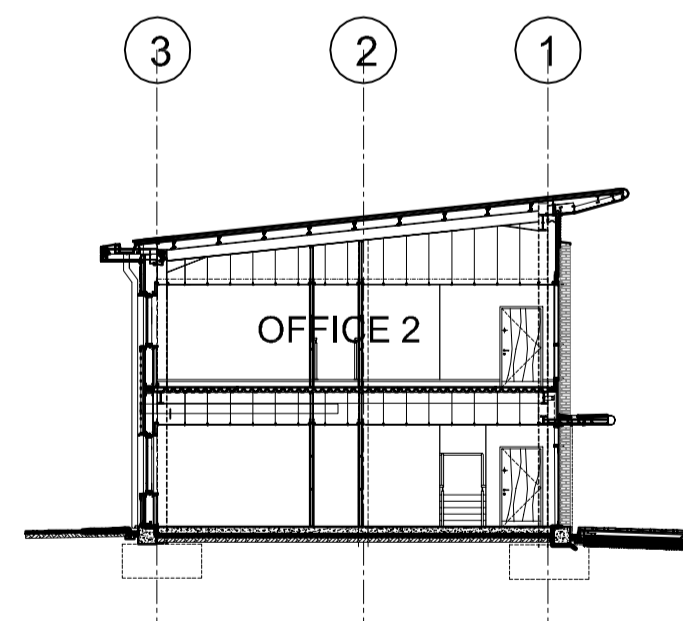
02
1105 WATERSIDE COURT OFFICE 1-3 SOUTH ELEVATION
1:200



03
1105 WATERSIDE COURT OFFICE 1-3 EAST ELEVATION
1:200



04
1105 WATERSIDE COURT OFFICE 1-3 NORTH ELEVATION
1:200



05
1105 WATERSIDE COURT OFFICE 1-3 SECTION
1:200

SCHEDULE OF EXTERNAL FACING MATERIALS

OFFICES		
1	Facing Brick	Kingsbury Smooth Cream
2	Wall Cladding	Horizontally laid treated timber boarding
3a	Curtain Walling	Clear low E glass in polyester powder coated aluminium curtain walling system. Colour : Charcoal grey RAL 7015 with top hung windows
3b	Curtain Walling	Laminated translucent glass in polyester powder coated aluminium curtain walling system. Colour : Charcoal grey RAL 7015
3c	Spandrel Panel	Composite flat metal panel in ppc aluminium curtain walling system. Colour : Prisma Silver Metallic RAL 9006
3d	Curtain Walling	Laminated blue glass panels in ppc aluminium curtain walling system. Colour : Charcoal grey RAL 7015
4	Roof	Fully Insulated Kingspan KS1000 RW composite roof panel Colour : HPS 200 Albatross Light Grey
5	Sunscreens/ brise soleil	Powder coated aluminium Colour: Metallic Silver RAL 9006
6	Overhanging roof soffit and Fascia	Flat metal panels colour: Prisma Zeus metallic dark grey with recessed downlighters in soffit
7	Entrance Canopy	Flat metal panels colour: Prisma Zeus metallic dark grey with recessed downlighters in soffit
8	Guardrail	Brushed stainless steel
9	Stair Cladding	Flat metal panels colour: Prisma Silver Metallic RAL 9006
10	Profiled Wall Cladding	Horizontally laid sinusoidal profiled steel cladding Colour: Prisma Grey Aluminium RAL 9007
11	Profiled Wall Cladding	Horizontally laid half round profiled steel cladding Colour: Prisma Silver Metallic RAL 9006
12	Windows	Clear low E glass in polyester powder coated aluminium window system. Colour : RAL 7015 Charcoal grey
12a	Windows	Laminated translucent glass in polyester powder coated aluminium window system. Colour : Charcoal grey RAL 7015
12b	Windows	Blue tinted glazed panels in polyester powder coated aluminium window system. Colour : Charcoal grey RAL 7015
13	Unit number/letter	Stainless Steel numeral
14	High Level Horizontal Band	High Level Recessed Horizontal Feature Band Charcoal grey RAL 7015
15	Joints	Vertical 'T' Flashing
16	Joints	Recessed 300mm wide vertical flashing - colour Charcoal grey RAL 7015

NOTES:

SUBJECT TO STATUTORY CONSENTS

SUBJECT TO SURVEY

BASED ON OS MAP REPRODUCED BY PERMISSION OF CONTROLLER OF HM STATIONARY OFFICE (c) CROWN COPYRIGHT

COPYRIGHT RESERVED

DO NOT SCALE THIS DRAWING

DO NOT USE ELECTRONIC VERSIONS OF THIS DRAWING TO DETERMINE DIMENSIONS UNLESS SPECIFICALLY AUTHORISED BY MICHAEL SPARKS ASSOCIATES

IF USING AN ELECTRONIC VERSION OF THIS DRAWING FIGURED DIMENSIONS TAKE PRECEDENCE AND NOTIFY MICHAEL SPARKS ASSOCIATES OF ANY DISCREPANCIES

ENSURE SEALING OF ALL JUNCTIONS TO COMPLY WITH PART L.

U-Values

Roof: 0.25

Floors: 0.25

Walls: 0.35

Glazing: 1.50

NOTE:

ROOF AND WALL CLADDING TO BE DESIGNED BY SPECIALIST CONTRACTOR.

CLADDING DETAILS TO BE READ IN CONJUNCTION WITH THE SPECIFICATION AND ALL RELEVANT BRITISH STANDARDS.

INCLUDE VAPOUR BARRIER TAPE AROUND ALL OPENINGS AND JUNCTIONS.

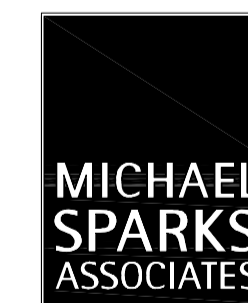
ALL DIMENSIONS TO BE CHECKED ON SITE.

STEEL COLUMN SIZES TO BE CONFIRMED AND TOLERANCES TO BE AGREED.

AS BUILT

THIS "AS-BUILT" DRAWING IS BASED ON INFORMATION SUPPLIED TO MICHAEL SPARKS ASSOCIATES BY MC LAREN CONSTRUCTION AND INCORPORATES INSTRUCTIONS AND OTHER DESIGN INFORMATION GIVEN TO MC LAREN CONSTRUCTION DIRECTLY BY OTHERS

REV	DATE	NOTE	DRAW	CHECK
A	25.03.2009	Refer to sub-contractors drawings for specialist details This supercedes drawing no: 2716/RE/302 rev.G	JH	NSC



CHARTERED ARCHITECTS

11 PLATO PLACE

ST. BONS ROAD

LONDON SW6 4TU

TELEPHONE 020 7736 6162

FAX 020 7736 3896

www.msa-architects.co.uk

FROGMORE

TITLE
CROSSWAYS, DARTFORD
DRAWING
WATERSIDE COURT OFFICE 1-3
ELEVATIONS & SECTION
CLIENT
FROGMORE

DATE	SCALE	DRAWN
MARCH 2009	1:200 @ A1	JH
	STATUS	CHECKED
	AS BUILT	NSC

DRAWING NUMBER
2716 / AB / 1105A